

# Available for Lease



Available for Lease:  
**Sierra Sky Plaza**  
8486 Sierra Avenue, Fontana CA

Fontana's strategic location and diverse economic engine place it at the forefront of the Inland Empire's dynamic transformation. **As the second largest city in San Bernardino County its economic pulse resonates throughout the region.**





# Sierra Sky Plaza



Fontana is estimated to break ground in October and forecasts delivery of the suites by **December 2026**. Therefore, tenants could be open as early as March 2027.



Densely populated with more than **215,000 residents**



Excellent visibility with **Average Daily Traffic (ADT) of 208,000**



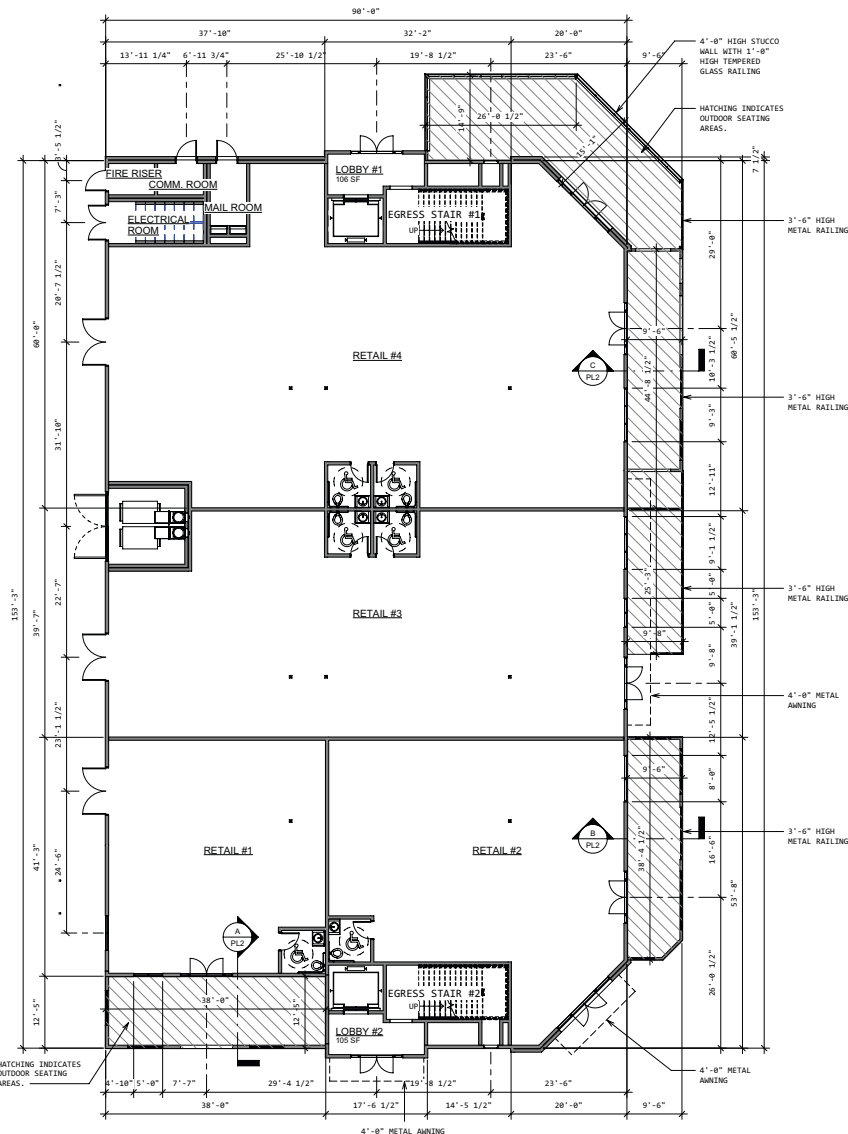
Median Household **Income of \$98,187**



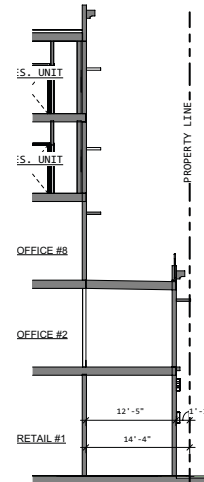
The largest employment industry is **Healthcare**



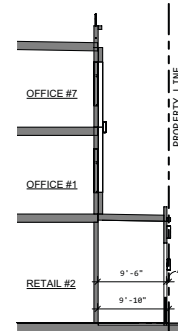
# Space Availability



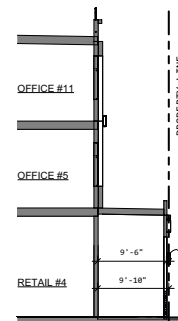
1st Floor Plan  
1" = 10'-0"



Section A  
1/8" = 1'-0"



Section B  
1/8" = 1'-0"



Section C  
1/8" = 1'-0"

## Suite #2

2,368 square feet gross, inclusive of a 360 square foot covered patio (café style seating). Based on the size, this restaurant should seat 95 people

## Suite #3

1,423 square feet gross, inclusive of a 205 square foot covered patio (café style seating). Based on the size, this restaurant should seat 55 people

## Suite #4

2,036 square feet gross, inclusive of a 243 square foot covered patio (café style seating). Based on the size, this restaurant should seat 80 people

## Suites #3 and #4

Can be combined into a single user for a space of 3,459 square feet gross, inclusive of a 448 square foot covered patio (café style seating).

Based on the size, this restaurant should seat 135 people

## Suite #5

5,045 square feet gross, inclusive of an 1,105 square foot covered patio (café style seating). Based on the size, this restaurant should seat 205 people.



# Experience Fontana

As Fontana welcomes young professionals, families, and retirees, its retail landscape adapts and diversifies. Familiar franchises find their place alongside artisanal bakeries and trendy gastropubs, catering to the evolving palates of a growing community.

New retail stores emerge, filling niches created by changing demographics and lifestyles. This dynamic interplay between job creation, population growth, and evolving consumer preferences ensures that **Fontana's retail sector remains not just vibrant, but perpetually relevant.**



For more information contact:  
**Monique Carter • (909) 350-6520 • [mcarter@fontanaca.gov](mailto:mcarter@fontanaca.gov)**  
*Marketing and Economic Development Manager*