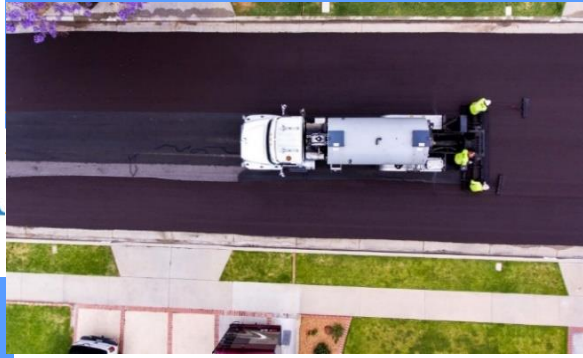




# CONSTRUCTION NOTICE



## PROJECT DURATION

Work is scheduled to begin in September and will last through December. Hours of construction will be from 7:00 a.m. to 5:00 p.m. for residential areas, Monday through Friday.

We appreciate your patience and cooperation during the construction of the improvements. To help the project run as smooth as possible, please direct any questions to the following:

PMI Information-Line  
(760) 802-8422

or

The City of Fontana  
(909) 350-7661

## City Of Fontana Street Maintenance Slurry Seal Project (REAS) VOH Lincoln Loop

**Petrochem Material Innovation is the contractor under contract with the City of Fontana to construct the above referenced project.**

You are receiving this notice because your street has been recommended to receive a slurry seal treatment or access to your residence will be impacted due to Slurry Seal application operations, on neighboring streets.

A Slurry seal, will protect the asphalt and subgrade from water damage and help to extend the life of the existing pavement. Slurry seals are typically used for streets in fair condition and when expensive reconstruction and asphalt overlay methods are not warranted. Prior to slurry sealing, various cracks will be sealed with rubberized crack seal and the striping will be replaced at the end of the project.

### What is the scope of the project?

This project includes applying weed kill, sealing various cracks, repairing asphalt, installing slurry seal, and restriping.

### How will I be affected?

On the day of the prep work and slurry seal, residential streets may be closed entirely to all vehicles. Some streets will be slurry sealed in stages to allow for through access at all times. We request that you refrain from parking on the streets the day of the slurry seal and do **NOT** drive on the slurry seal until it cures (about 4-8 hours after it is applied) in most instances, streets will be reopened by 5:00 p.m. each day. Also, please avoid running your sprinklers the night before or the day of the resurfacing if any water will run off your property into the street.

### What about parking?

"No Parking" signs with the exact date of closure will be posted adjacent to the areas of work at least 72 hours in advance of the work. If unexpected delays occur, the new date will be posted at least 72 hours prior to the rescheduled date.

### Multiple Treatment Needed?

**In some Areas there will be more than one treatment (2 Coat) and the areas will be posted accordingly, You will always see the no parking signs posted 72 Hours prior to the date of construction.**

**Please follow the posted no parking dates and times.**

### What can I expect from the slurry seal?

**When the slurry seal is applied, it is a dark Brown color due to the chemical reactions and the temperature of the mix. As the mix be comes exposed to heat and sunlight, it will begin to turn black. The rough appearance of a slurry seal is not that of a new overlay street; however, this does not affect the quality of the slurry seal as it is not a structural or aesthetic improvement. Slurry is a maintenance product that help to extend the life of the existing pavement.**

**Even after the streets are open, it could take up to a year for the slurry to completely cure. Because of this, normal driving on recently slurried streets may cause some tire tracks (especially at the ends of cul-de-sacs), or gouges from turning wheels while your car is not moving. While this will affect only the appearance of the streets, and many times is unavoidable, much of this will disappear with time and traffic.**

### Will there be changes to the schedule?

Scheduling a project of this type may require frequent changes. The city and the Contractor will make every effort to minimize impacts to the community and to keep the project on schedule. However, in the event of changes in the schedule of construction activities, the community's cooperation will be greatly appreciated.

### What about trash pickup and street sweeping?

Work will be coordinated with the City's trash hauler to allow for normal trash pickup operations. If the date of resurfacing coincides with that of your trash collection, please bring out your trash bins early the day of or the night before. The contractor will coordinate with the trash hauler to collect the trash prior to street closure for that day. Street sweeping will be suspended during the slurry seal to allow for the street to properly cure.

**Your street will be closed for  
Slurry Seal On**