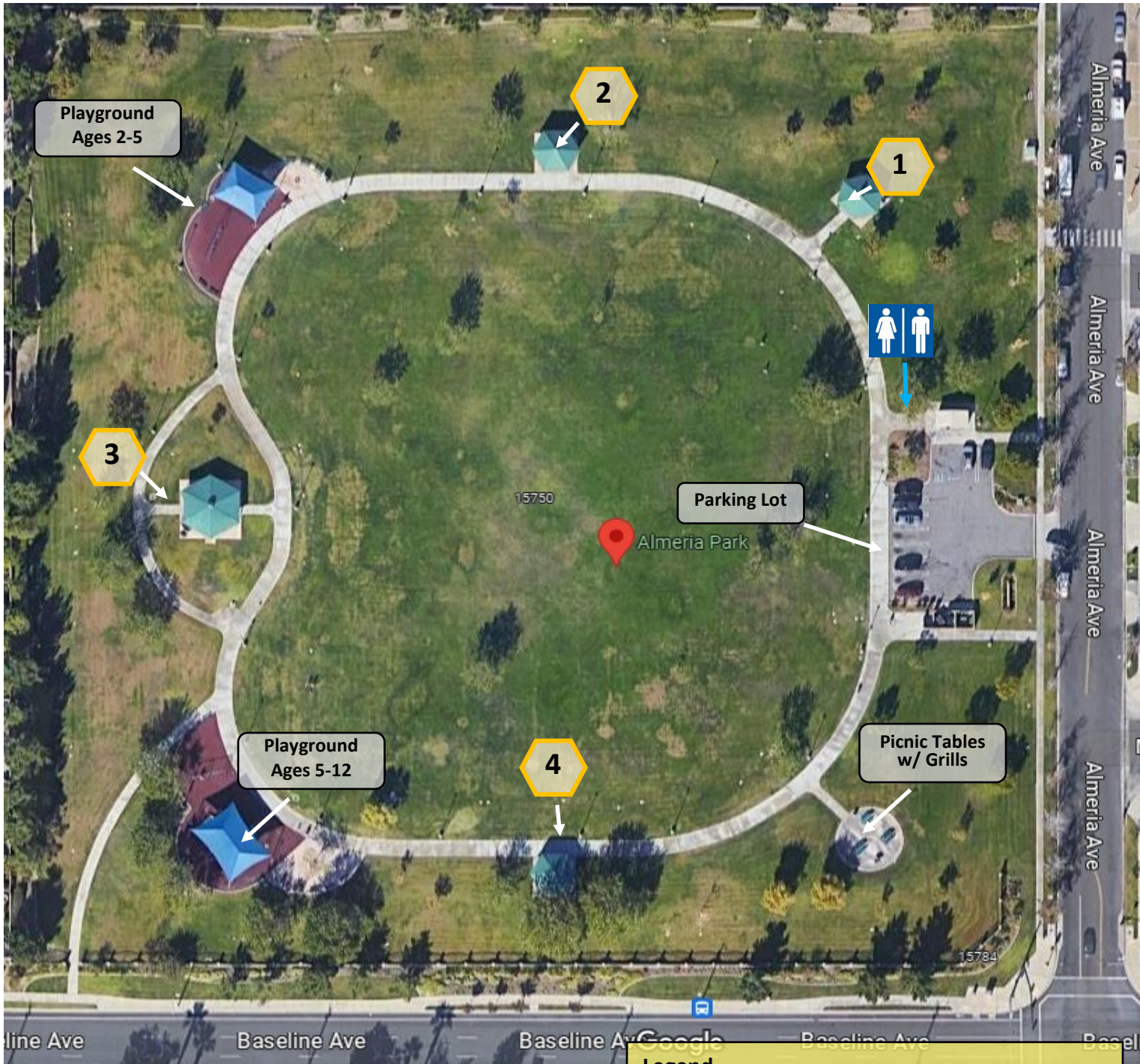


Almeria Park– 7250 Almeria Avenue



Inflatable units are allowed by permit only and proof of insurance is required at least two weeks prior to the event date. **Bouncer permits are non-refundable.** All renters must adhere to established park regulations.

(Ordinance #1652, Chapter 19, Sections 1-3)

Legend

- 1 Shelter #1 – 3 tables, Capacity 30, BBQ
- 2 Shelter #2 – 3 tables, Capacity 30, BBQ
- 3 Shelter #3 – 4 tables, Capacity 40, BBQ
- 4 Shelter #4 – 3 tables, Capacity 30, BBQ

Electricity and water are not provided at any of the parks and shelters.